

PRODUCT DESCRIPTION

BLW™ is a ready to use cold applied single component, bitumen emulsion based waterproofing product which cures to provide a seamless tough durable and elastic coating.

The BLW™, which has a wide range of applications, is suitable for use on most surfaces. Additionally, since it does not contain flammable and toxic substances, it can be safely used in enclosed spaces.

PRODUCT FEATURES

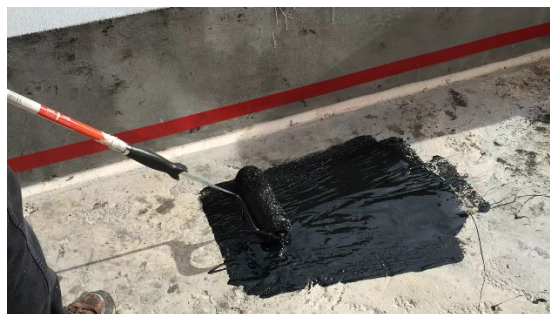
- Single component product
- Bitumen emulsion based
- Ready to use & easy to apply
- Cold applied
- Adheres strongly to various substrates
- Applied by brush, roller or airless spray
- Non-sag on vertical surfaces
- Resistance to UV radiation
- Possibility of application on various substrates

PRODUCT USES

- As water and moisture proofing material in underground applications such as foundation, and basements.
- Protection and isolation of concrete structures elements, which are exposed to sewage water and continuous or temporary water pressure.
- As water proofing material in dry or slightly moist surfaces such as terrace, kitchen, bathroom, etc.,
- Isolation of mineral surfaces such as concrete, stone, brick, briquette, plaster, grout, etc.
- Repair of old isolation's such as bituminous membrane, asphalt, etc.

TECHNICAL DATA & FIBER PROPERTIES (DRY)

Chemical Base	Bitumen Emulsion
Color	Black
Density	1 – 1.2 gr/cm ³
Drying Time	2-4 hours @ 25°C (Touch dry)
Solid Content	50-70%
Ambient Air Temperature	5°C – 40°C
Tensile Strength	1-2.5 MPa
Low temperature flexibility	-10°C
High Temperature Resistance	60°C
Elongation at Break	500 %
Application Methods	Brush Roller Airless Spray
Storage Conditions	Store dry at 5°C – 35°C



Bitumen Liquid Waterproofing - BLW™

HOW TO USE

SURFACE PREPARATION

- Substrate must be uniform, dry, free of dust, oil or grease and loose or friable particles.
- Surface defects, voids, honeycombing, etc. in the concrete must be repaired with suitable repair mortars before coating.

APPLICATION

- BLW™ bitumen liquid waterproofing can be applied by brush, roller or airless spray.
- Applied thickness should be 3-5 mm
- In areas with wide cracks and high-pressure water and when two or more coats are required, it is recommended to use it together with reinforcements such as fiberglass mesh.
- When two or more coats are required, it is important that the preceding coat is fully dry before the successive coat is applied.
- If a primer coat is applied, allow it to dry completely before applying subsequent coats.
- Protect freshly applied product from rain until it's fully cured.

PACKAGING

10ltr and 20Ltr metal containers

STORAGE

Store properly in unopened and undamaged original sealed packaging. Store in dry conditions between +5°C to +35°C.

HANDLING

Approved personal protection equipment should be worn at all times. Particle mask is recommended for possible airborne particles. Gloves are recommended when handling the product to avoid skin irritation. Safety glasses are recommended to prevent eye irritation. Wear chemical resistant clothing / gloves / goggles.

FIRST AID

In case of skin contact, wash thoroughly with soap and water. For eye contact, flush immediately with plenty of water; contact physician immediately. For respiratory problems, remove to fresh air. Wash clothing before reuse.

DISCLAIMER OF LIABILITY

AFZIR, LLC warrants its products to be free from manufacturing defects. Buyer determines suitability of product for use and assumes all risks. Buyer's sole

remedy shall be limited to replacement of product. Any claim for breach of this warranty must be brought within one month of the date of purchase.

AFZIR shall not be liable for any consequential or special damages of any kind, resulting from any claim or breach of warranty, breach of contract, negligence or any legal theory.

The Buyer, by accepting the products described herein, agrees to be responsible for thoroughly testing any application to determine its suitability before committing to production.